



Introduction to



Speedrack

Products Group, Ltd.

Welcome to Speedrack!



Dan Rozycki

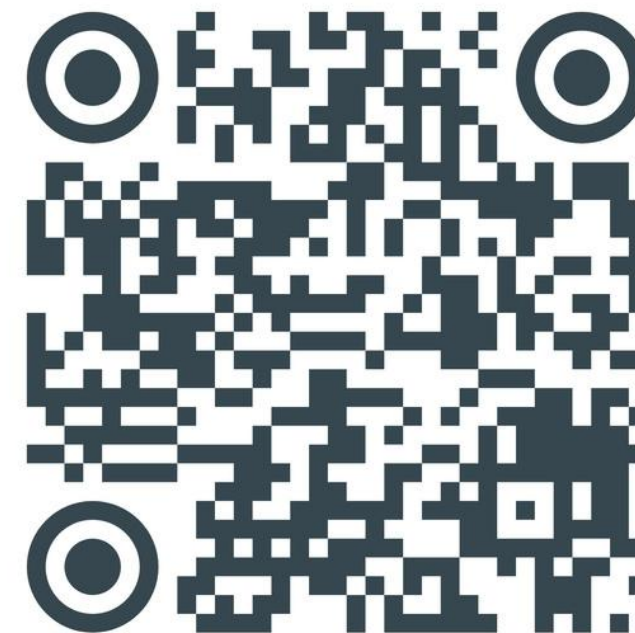
Vice President of Sales & Marketing

email: drozycki@speedrack.net

phone: 616.887.0002 ext. 3565



Connect on LinkedIn!





Speedrack

Where Quality and Innovation Stack Up.

DISTRIBUTOR DAYS

Tuesday August 12th, 2025

Visit speedrack.net/apex or scan this QR Code to view the itinerary, download presentation slides, and more!



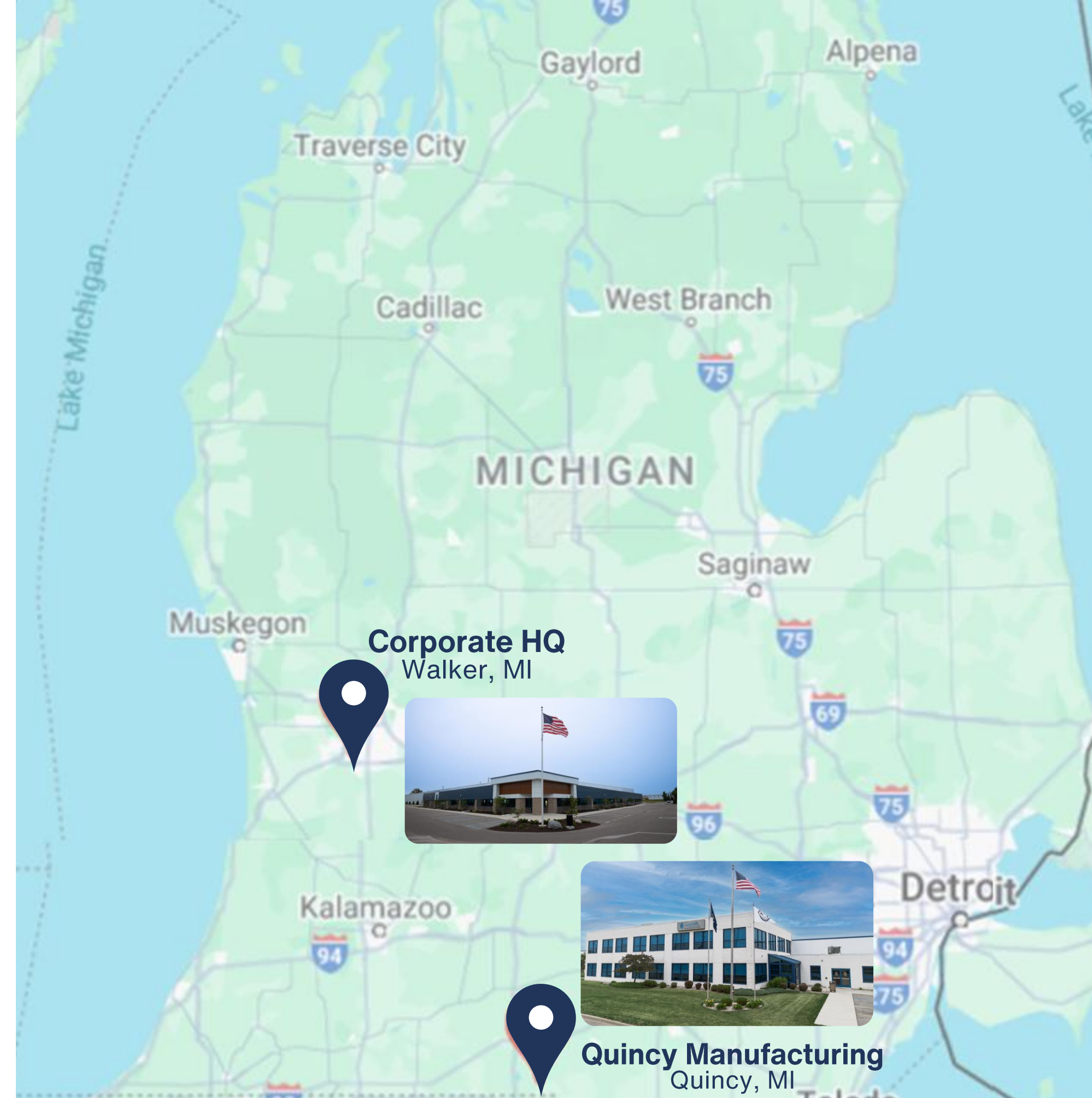
Agenda

- 1.Introduction** – Eric Quist, *President*
- 2.Manufacturing Update** – Paul Elia, *VP Operations*
- 3.Sales & Marketing Update** – Dan Rozycki, *VP Sales & Marketing*
- 4.Engineering Update** – Bill Roney, *VP Engineering*
- 5.Project Management Update** – Dan Rozycki, *VP Sales & Marketing*



Speedrack

Products Group, Ltd.



Meet Our Leadership Team



Eric Quist
President



John O'Brien
Chief Financial Officer



Paul Elia
VP of Operations



Daniel Rozycki
VP of Sales & Marketing



Jason John
VP of Project Management



Laura Sigg
VP of Human Resources



Bill Roney
VP of Engineering



Emily Kelleher
Executive Assistant

Vision & Mission Statements

Vision

“To deliver premier solutions so our customers can distribute goods to the world.”

Mission

“To deliver unmatched quality solutions and customer care by developing leaders and enriching the lives of our employees while minimizing our environmental footprint.”

Our Values

PARTNERSHIP

Treating all stakeholders as team members by valuing a commitment to win-win results for long-term gains.

ACCOUNTABILITY

Conducting ourselves to meet expectations and standards by owning the failures and sharing the successes.



INTEGRITY

Leading by example, demonstrating respect towards others and always putting forth an ethical and moral solution.

INNOVATION

Leveraging continuous improvement with creativity to develop strategies, product designs, and best practices to grow our people and deliver best in class solutions.

TEAMWORK

Working inclusively towards a shared vision by building trust and treating others as internal customers.

PASSIONATE LEADERSHIP

Engaging ourselves in the pursuit of excellence at every level of the business through appreciation and education of others and challenging to do better and be better.

Rooted In Our Community.



Speedrack Serves

2024

\$ Raised: **\$7,757**

\$ Matched: **\$2,465**

Hours Served: **236**

Organizations Supported: **10+**

Employee-Owner Investments

- New HRIS System
- Enhanced Benefits Program
- Employee Committees for Innovation & Improvement, Investments, ESOP, and Community

Events

- Share Price Reveal Day Celebration
- October ESOP Month Celebration
- Monthly Retention Events

Speedrack History

- Speedrack pioneered modern storage systems when it began manufacturing storage racks in Skokie, IL in 1954
- **Initiated the totally tubular rack design in 1971**
- Charter member of the RMI (Rack Manufacturers Institute)
- Established Sparta, MI headquarters in 1989
- Purchased Palmer Shile and Keystone in 1990
- Incorporated Applied Dynamics to manufacture associated product lines in 1991
- **Opened the state-of-the-art Michigan Manufacturing Facility in spring of 2003**
- Introduced Innovative “e-commerce focused” Hybrid Shelving and Cantilever storage solutions in 2012
- Opened a second satellite manufacturing facility in Litchfield, MI primarily for LTL and stock uprights and beams in the summer of 2017
- Expanded the Quincy, MI manufacturing facility by **150,000 square feet**
- **Opened brand new state of the art facility in Walker, MI in 2022**
- Became an ESOP in 2023



Speedrack Updates



Recently became an “ESOP” Company

- “Proud to be 100% Employee-Owned”
- Union Members part of the ESOP
- Ownership Culture Ambassadors “OCA”
- Employees thinking and acting like Business Owners
 - Productivity, Safety, Quality, etc.



Operations

- Quincy and Walker
- Corporate Offices
 - Bringing Engineering, Sales, Manufacturing, etc. together all under one roof





Current Business Climate

- 2025: Some hesitancy/uncertainty this year
- AMM and steel pricing



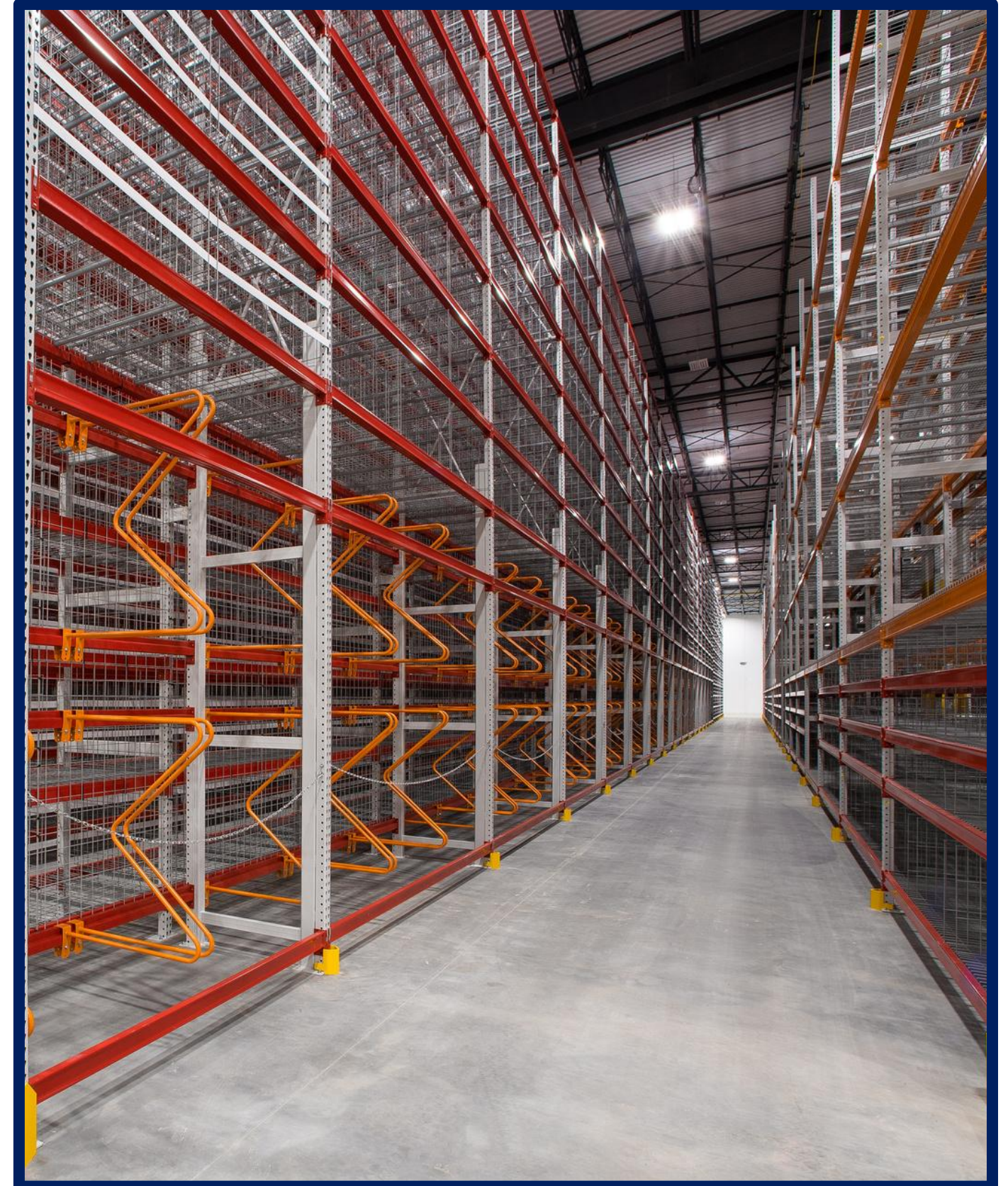
Manufacturing Operations

- New 275K sq ft Walker facility
 - New Corporate offices
 - 50% increase in overall manufacturing capacity
 - Better than expected mill/welding output
- Manufacturing redundancy – all plants
 - 4 powder coat paint lines
 - 3 new multi-purpose lines
 - 6 rolling mills
 - 2 new state-of-the-art column/beam combo lines
 - Robotic welding – Quincy and Walker
- Room to expand



Forward Thinking

- Speedrack/Stow partnership
- Diversify racking/product offerings



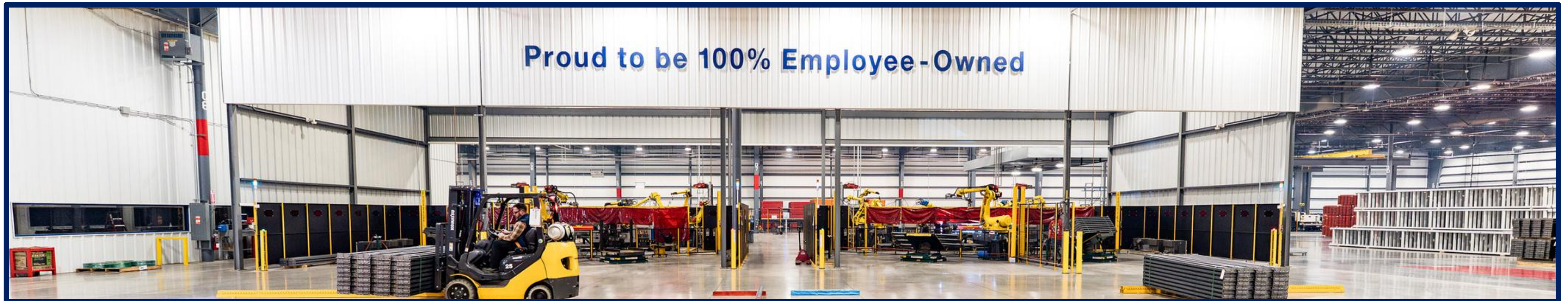
MANUFACTURING UPDATE



Speedrack
Products Group, Ltd.

Walker Operations

- ✓ • **New state-of-the-art Paint lines in Quincy Expansion (2020-2021) and Walker (2022)**
 - Decades of return
 - Less powder consumption
 - More environmentally friendly (versus original lines)
- ✓ • **Feasibility analysis for new Beam-only paint line in Quincy**



Certifications / Memberships



eco



MHEDA
Material Handling Equipment Distributors Association



MHI
Member Company



AWS
American Welding Society



CERTIFIED
ENVIRONMENTAL
PRODUCT DECLARATION
UL.COM/EPD



DMT
Rack Manufacturers Institute



ARS
ASSESSMENT
PRIVATE LIMITED
ISO 9001
Certified
Management System



CWB
CERTIFIED



Storage Rack:
Cold-Formed Steel
ANSI MH16.1-2023
R
5040
Rack Manufacturers Institute
**CERTIFIED
MANUFACTURER**

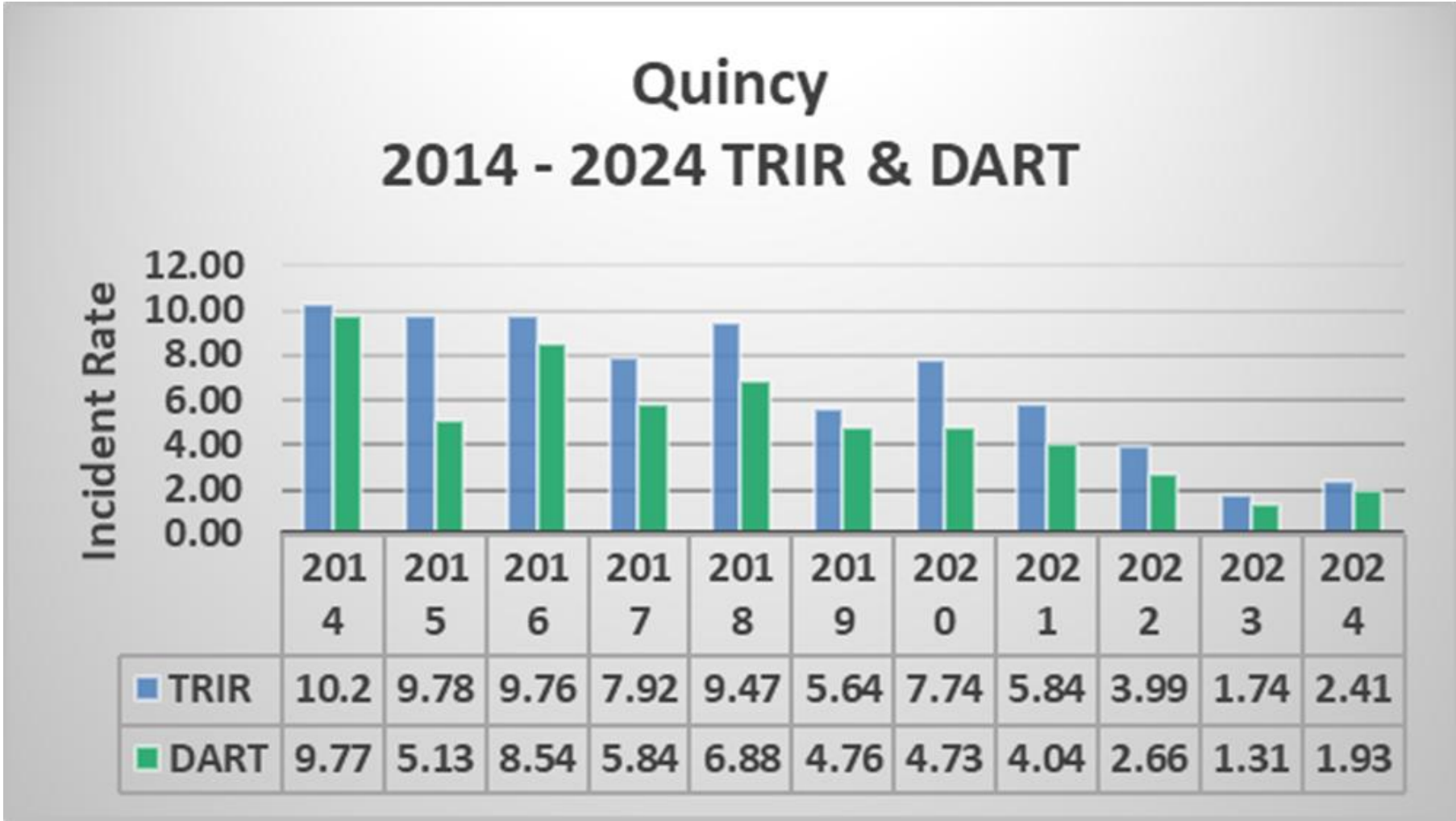


Avetta

100% Made in the USA

Speedrack is proudly 100% American-made, using only the highest quality steel sourced from the USA. By keeping our production domestic, we ensure superior craftsmanship, maintain strict quality control, and support local jobs and businesses. Our commitment to using American steel guarantees that our products meet the highest durability and performance standards in the industry.

SAFETY ACHIEVEMENTS



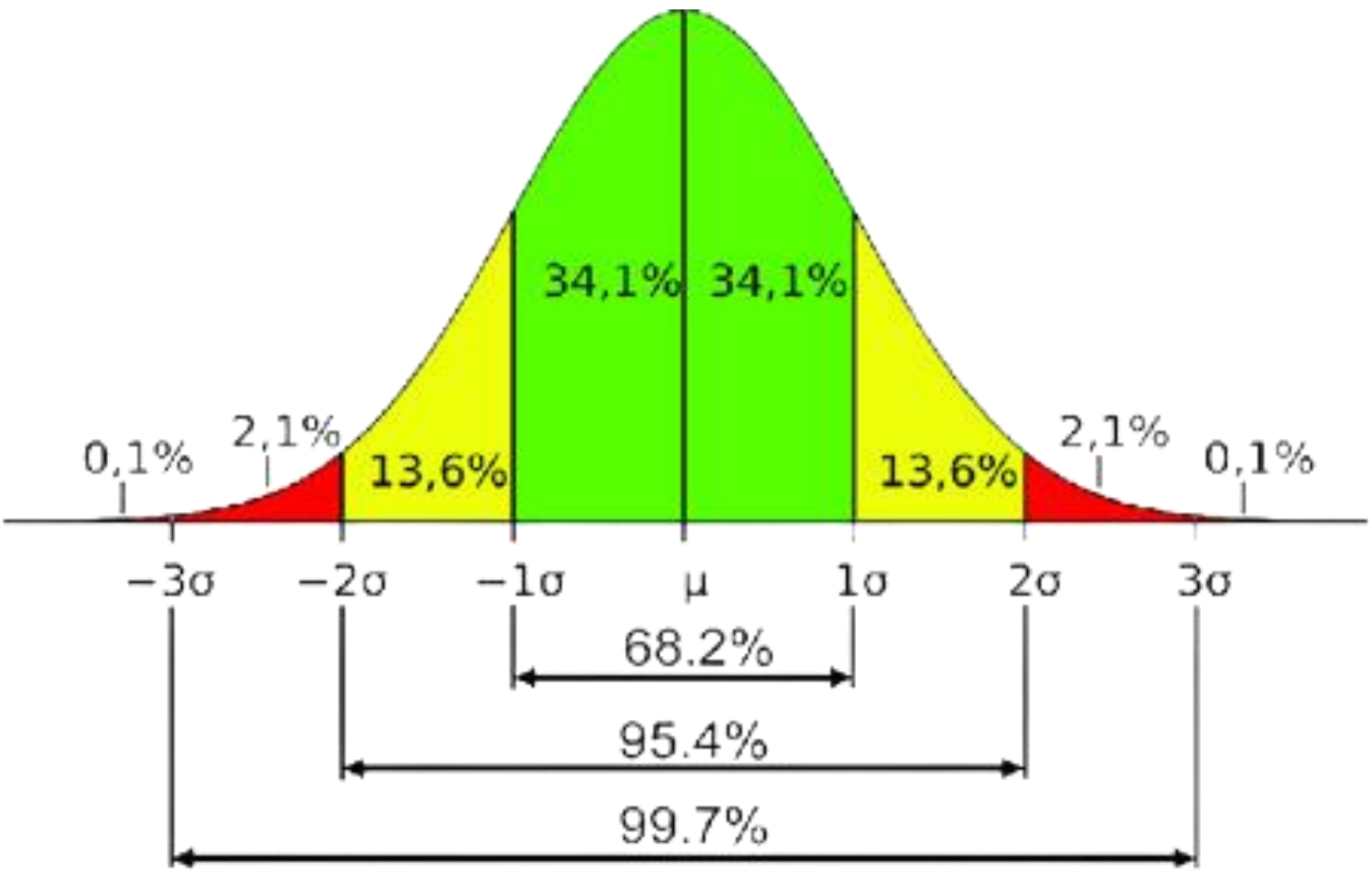
- 2nd Straight Year under 3.0
- 254 Days: Most Consecutive Days without a Recordable Injury ever
- 281,612 Hours: Most Hours Worked without a Recordable Injury ever
- 2024 Average Headcount: 187



- 657 Days: Most Consecutive Days without a Recordable Injury ever
- 270,416: Most Hours Worked without a Recordable Injury ever
- 2024 Average Headcount: 70

2024 Manufacturing Review

- 91% Defect-Free lbs. shipped
- 1.8 Million units shipped
- 727 defective units replaced
- 405 defects per million parts
 - Approaching 5 Sigma

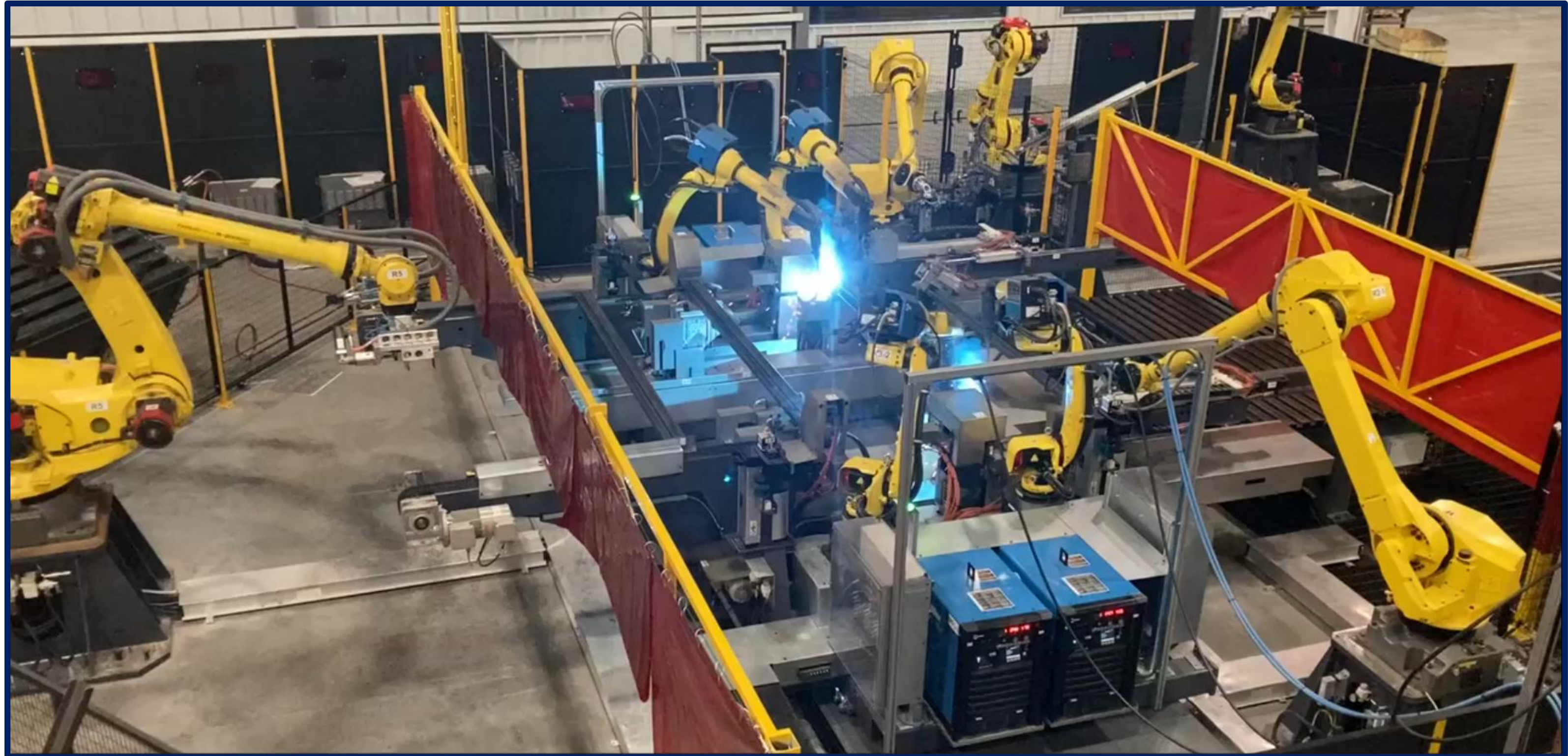


SIGMA	Defect per Million	Defect Based on Sale	Capability
6 Sigma	3.4	Less than 10% of Sale	World Class
5 Sigma	230	10% to 15% of Sale	World Class
4 Sigma	6200	15% to 20% of Sale	Industry Average
3 Sigma	67,000	20% to 30% of Sale	Industry Average
2 Sigma	310,000	30% to 40% of Sale	Noncompetitive
1 Sigma	700,000		Noncompetitive

Walker: Shipping, FGs, Upright Weld



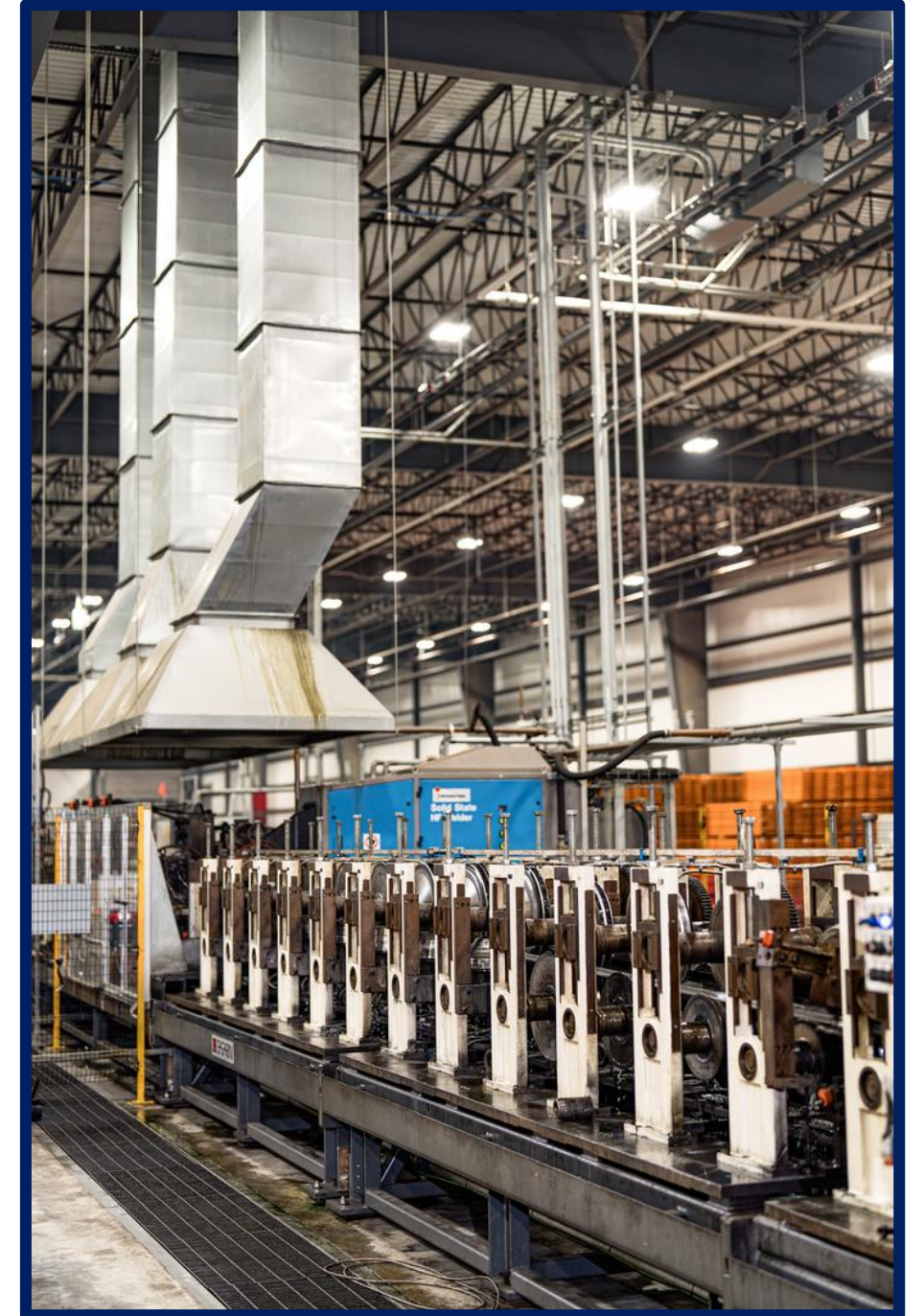
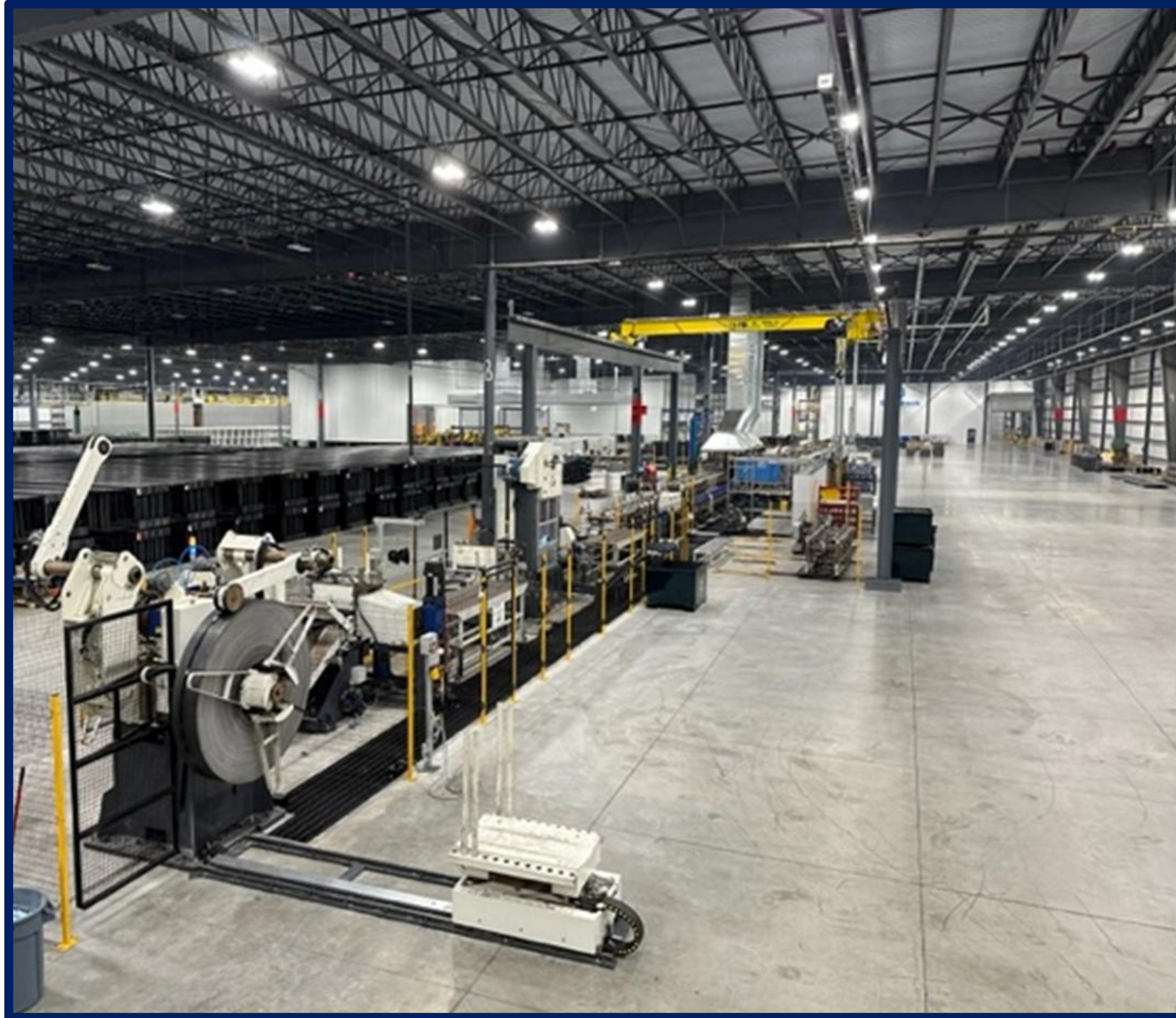
Walker: Robotic Welding “Island” Cell



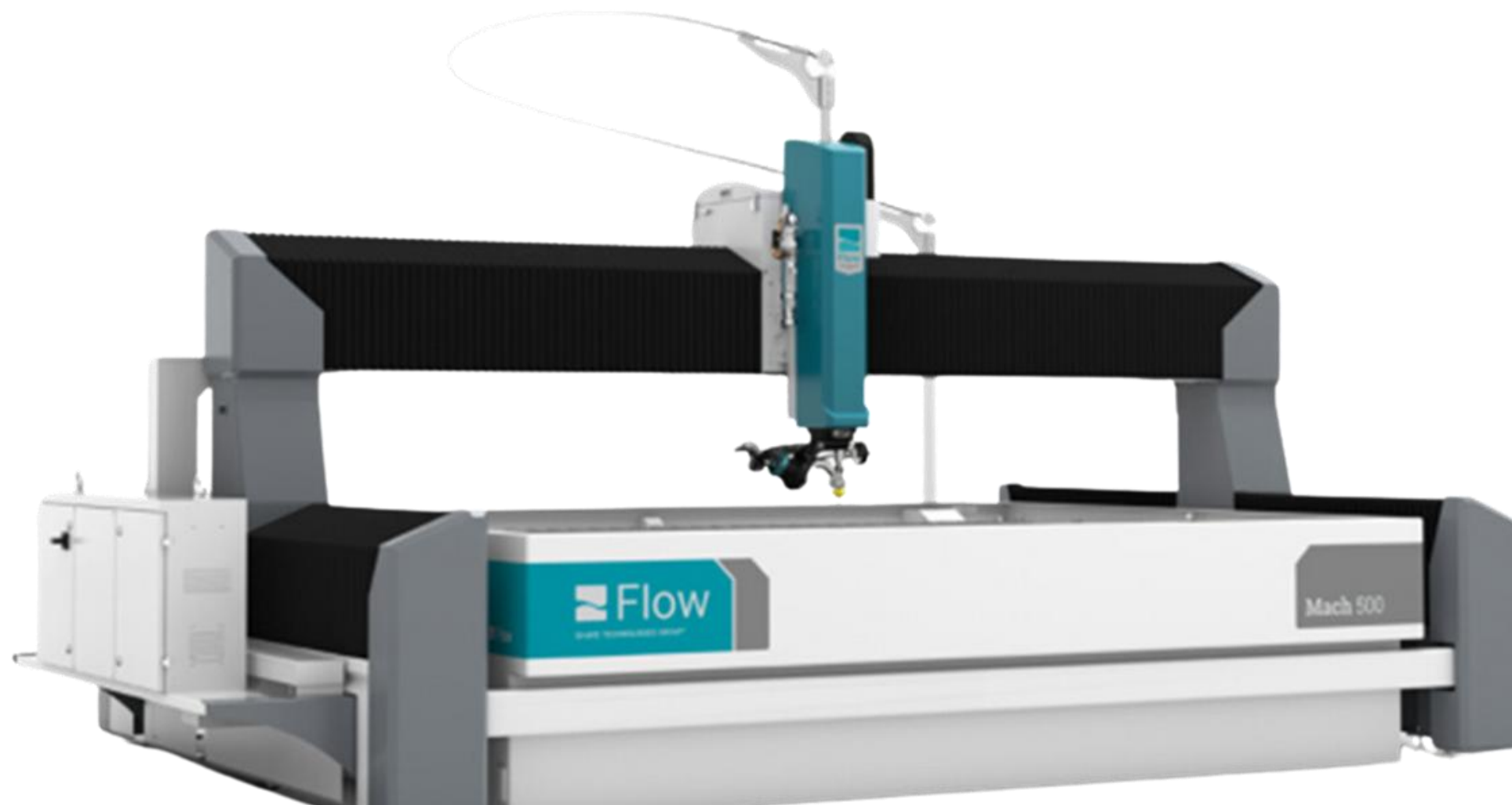
Walker: Paint Line (605 feet long)



Walker: Roll-Forming Mill



Equipment Investments



Cut thicker materials



High-Quality Surface Finish



No Heat Damage



No Vapors Produced



Will Not Melt Any Material

Equipment Investments



SALES & MARKETING **AT SPEEDRACK**



Speedrack
Products Group, Ltd.

Meet Our Sales Team



Dan Rozycki
VP Sales & Marketing



Bretton Johnson
Senior Program Manager



Jacob Schott
Program Manager



Greg Dunneback
Estimating Manager



Cory Mahler
Inside Sales / Estimating



Tim Boeve
Inside Sales / Estimating



Shae Szalewski
Inside Sales / Estimating



James Drew
Inside Sales / Estimating



Donnie Leftrick
Regional Sales Manager



John Loose
Regional Sales Manager



Craig Pitsch
Regional Sales Manager



John Oliveira
Regional Sales Manager



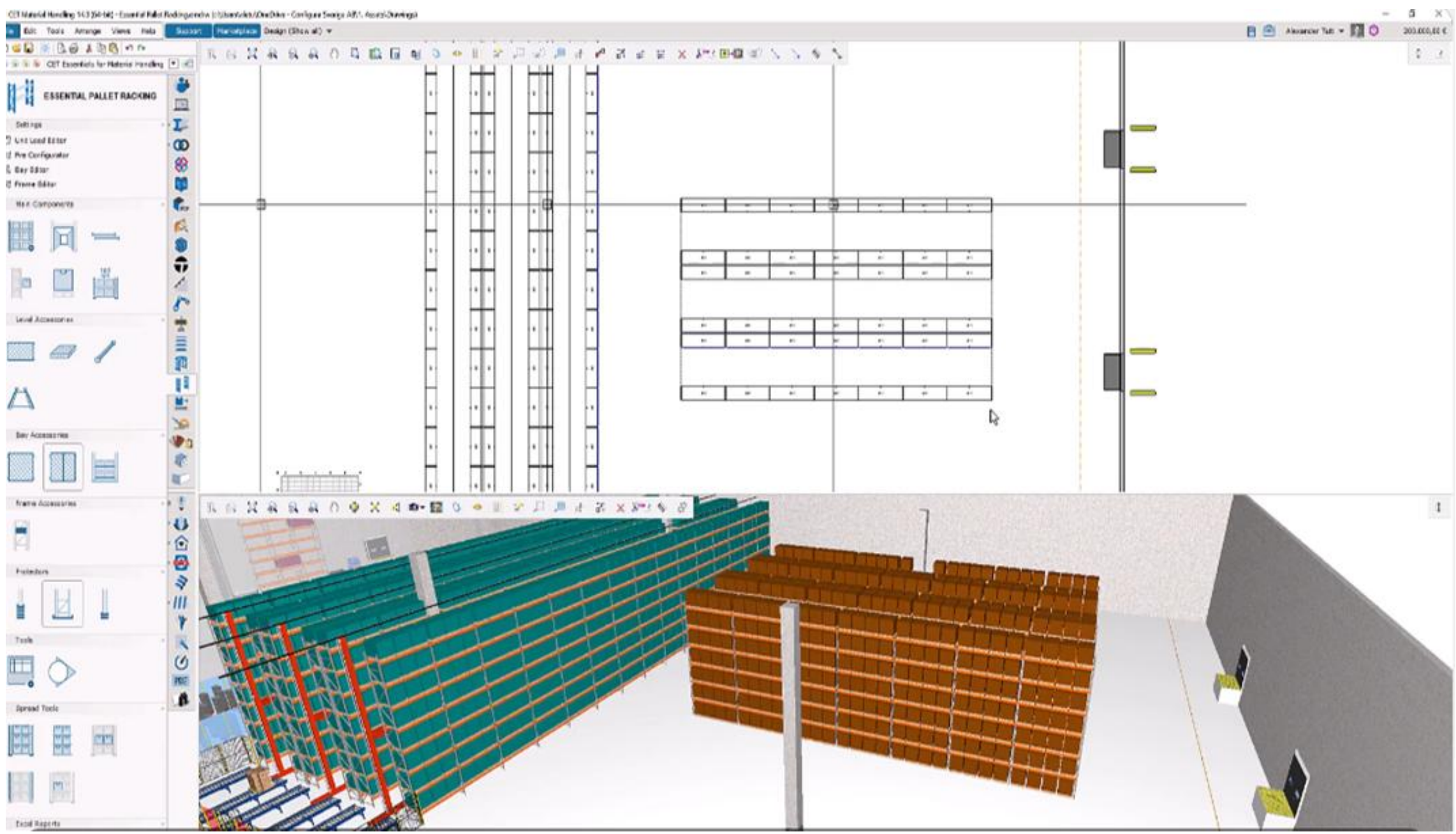
Tricia Bouma
Marketing Manager

What is Configura



Software that helps you design, specify, present, and order large-scale projects accurately and efficiently.

Immersive 2D & 3D Design



BOM & Proposal

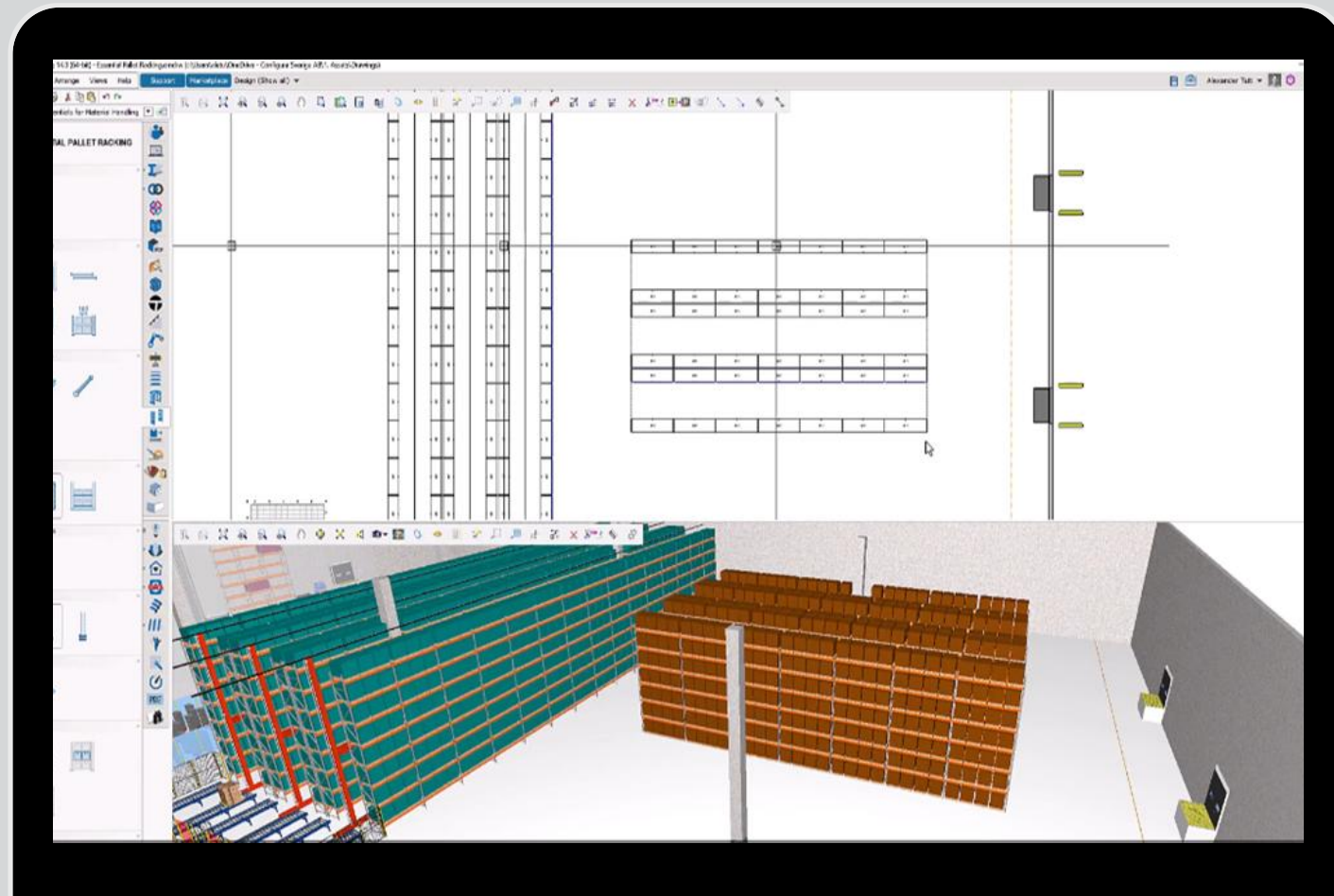


Renders & Videos



Drawings & Docs





CONFIGURA

- Large Speedrack Investment
 - Time & Money
- Easier & Faster to work with Speedrack Sales
- Better Sales Product for Customers
- More orders for everyone!

LAUNCHED JULY 2025!

SPEEDRACK'S CET EXTENSION ENABLES USERS TO DESIGN STANDARD PALLET RACKING SYSTEMS USING DIMENSIONALLY AND VISUALLY ACCURATE COMPONENTS. THE EXTENSION CURRENTLY SUPPORTS BOTH TEARDROP AND STRUCTURAL RACKING SYSTEMS, AND INCLUDES THE FOLLOWING FEATURES:

FRAMES

- Teardrop and structural frames with correct bracing.
- Upright extensions.

BEAMS

- Roll-form and structural beams with adjustable endplates.
- Backstop beams, perforated beams, and vertical spacers.

SUPPORT & SAFETY ACCESSORIES

- Crossbars, fork entry bars, skid channels, and drum cradles.
- Welded and bolted column protectors.
- Row spacers, wall ties, and cross-aisle ties.



LOAD MANAGEMENT & BAY CONFIGURATION

- Customizable unit loads for standard and non-standard products.
- Fully adjustable level spacing that accounts for product clearance.

BILL OF MATERIALS (BOM)

- Automatically create detailed Bills of Materials (BOM) with real Speedrack part numbers.

PROPOSAL AND QUOTE 2D & 3D VISUALIZATION

- Import existing CAD or PDF layouts to serve as design templates.
- Develop accurate 2D floorplans and dynamic 3D layouts in real time.
- Generate high-quality, photo-realistic renderings ideal for client presentations.

PROJECT DOCUMENTATION

- Premier Turnkey Solution and seismic proposals checked by engineering for accurate design and cost-savings options

DESPITE ITS ROBUST FEATURE SET, THE SPEEDRACK EXTENSION HAS A FEW LIMITATIONS. MANY OF THESE ARE ALREADY BEING CONSIDERED FOR FUTURE DEVELOPMENT TO FURTHER ENHANCE DESIGN ACCURACY AND WORKFLOW EFFICIENCY.

CURRENT LIMITATIONS:

PRICING INTEGRATION

While the extension displays list pricing for reference, this should not be considered accurate for budgeting or quoting purposes. Final pricing must be confirmed by a Speedrack sales associate after the Bill of Materials (BOM) has been generated and reviewed.

STRUCTURAL ANALYSIS

The extension does not perform engineering-grade structural calculations, such as load-bearing capacity or seismic analysis. These evaluations must be completed by a licensed structural engineer.

CUSTOM FABRICATION

While the extension includes a wide range of configurable components, it does not accommodate highly customized or engineered-to-order items that fall outside Speedrack's standard product library.

FUTURE ENHANCEMENTS:

More Robust Racking types

- Future updates may include expanded support for other Speedrack solutions such as:
- Drive-in/drive-thru racking, Push-back racking, Pallet flow systems, Shuttle systems, Pick Modules

Basic Load Validation Tools

- Integration of simplified load-checking features to assist with safe and compliant racking design.

Improved Custom Component Support

- Expanded flexibility for special-length parts, custom accessories, or unique configurations.



Contact cetsupport@speedrack.net to learn more.



Speedrack

Where Quality and Innovation Stack Up.

Empowering our Distributors through **Marketing**

How Marketing is working for you to help drive sales, close deals faster, and grow brand value.



- **Enhanced Digital Presence**

- Updated Website
- Online Product Information



- **Building Brand Awareness**

- Social Media
- Distributor Spotlights



We're in this together!



- **Better Sales Support Materials**

- New literature and brochures
- Test Video
- Improved product photos and visuals



- **Collaboration and Feedback Loop**

- We're Listening!
- Coming Soon:
 - Product Photos
 - Sales Sheets
 - Case Studies
- Opportunities:
 - Distributor Spotlights
 - Case Studies
 - Guest Blog Posts



- **Digital Tools and Configurability**

- Configura



Speedrack
Chairman's
2026 Club

Chairman's Club 2026

ENGINEERING AT SPEEDRACK



Meet Our Engineering Team



Bill Roney

Vice President of Engineering



Eric VanSpronsen

Senior Structural Design Engineer



Madhav Gaur

Structural Design Engineer



Eric Catlin

Structural Design Engineer



Bismark Yeboah

Structural Design Engineer



Tejeswar Rayala

Structural Design Engineer



Greg Pummel

Senior Designer



Megan Lowrie

Senior Designer

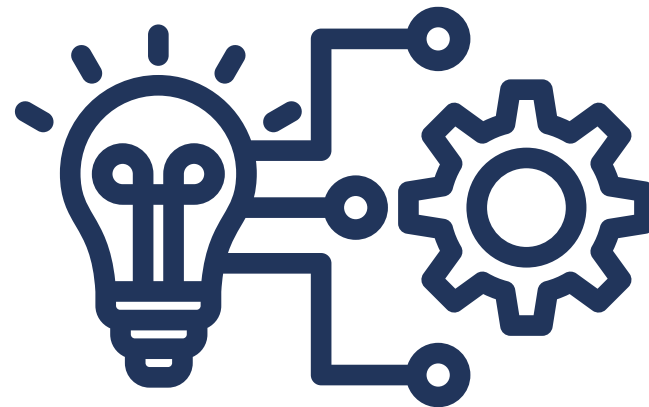


Marc Clement

Senior Designer

Engineering Services

- Quote Checks
 - Turnaround in 2 days or less
 - Supports timeline quotes
 - Quote Checks per Year:
 - 2022: 116
 - 2023: 280
 - 2024: 315
 - 2025: 143 YTD (June)
- Permit Drawings & Calculations
 - Supports project schedule
 - 2022: 42 completed
 - 2023: 86 completed
 - 2024: 104 completed
- Custom Designs



Automation & Robotics Support

- Speedrack is ready to support you on future projects
- Custom details with built-in adjustability
- Enhancements in Production for Required Tolerances
- Grace Bartrand - *Director of Quality & Continuous Improvement*
- Incorporated Lessons Learned from Various Installs
- Technical Acceptance Process:
 - a. Speedrack engineering reviews technical specifications
 - b. Clarifications on tolerances and other requirements (labels! millimeters!)
 - c. Worked on multiple styles & applications
 - d. **Examples Include:** Stow, HAI, Amazon, Libaio, BoxLogix, Spacemaker

Technical Document Clarifications		
Date:		
Section	SPGL Clarification	Response



RMI Updates

- **RMI Committee Leadership Changes**

- Engineering Committee Chair: Logan Kebeli -- *Advance*
- Engineering Committee Vice Chair: Bill Roney -- *Speedrack*
- SAC Chair: Andrew Bishop -- *Unarco*
- SAC Vice Chair: Nathan Bissonnette -- *Nucor*

- **Cantilever Standard ANSI/RMI MH16.3 is now complete**

- Developing R-Mark procedure
- Testing requirements



- **Revision to MH32.1-2018**

- Stairs, Ladders, and Open-Edge Guards for use with Material Handling Structures

- **Expansion of Base Plate Testing**

- Initial industry-wide tests in 2009
- Base Spring Constant is a critical design input for new analysis

- **Drive-In Chapter in Development**

- Will be incorporated in next revision of MH 16.1

PROJECT MANAGEMENT AT SPEEDRACK



Speedrack
Products Group, Ltd.

Meet Our Project Management Team



Jason John
VP of Project Management



Billy Nowak
Project Manager



Ryan Bouwhuis
Project Manager



Ben Reitemeier
Site Coordination Manager



Clifford Pitsch
Project Manager



Brian Allison
Project Manager



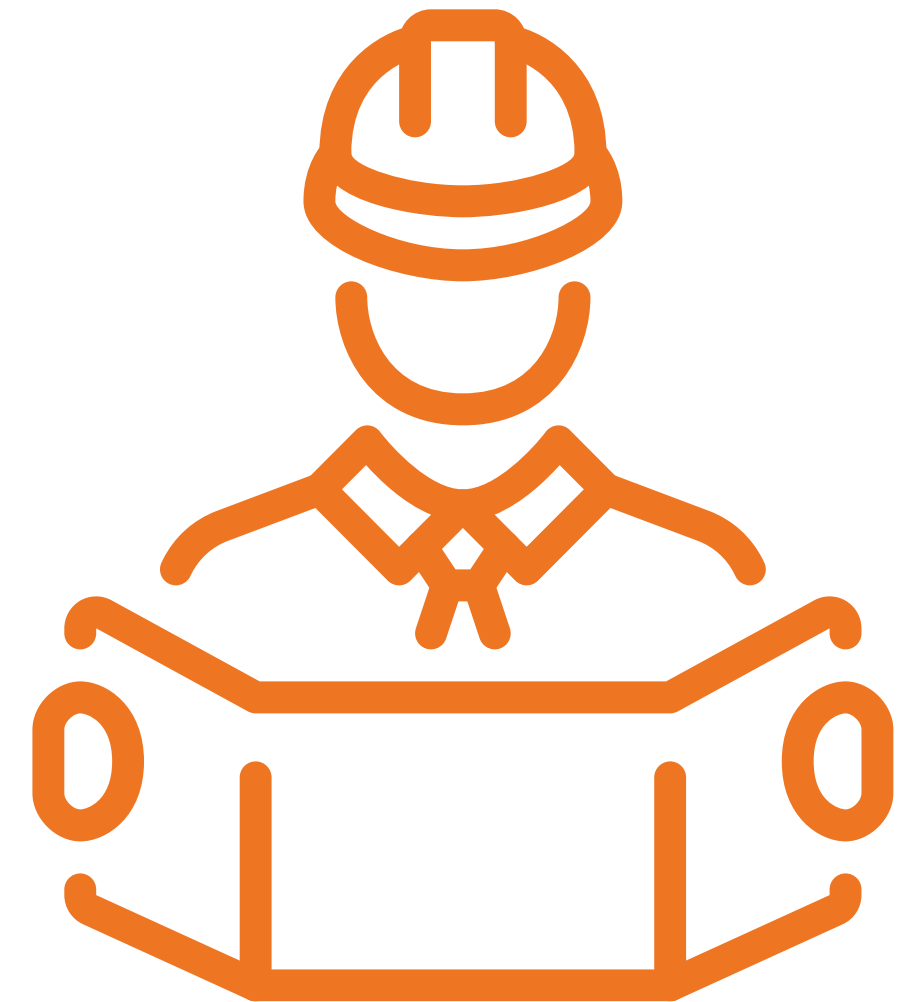
Hollie Potts
Project Manager



Jennifer Rainey
Project Coordinator

Project Management **Services**

- Permitting
 - Local licensing
 - P.E. Stamped Drawing Plan Submittal
 - Timeline Management
- Material Management
 - Ordering all material required for project scope
 - Creating and Managing shipping schedules
 - Coordinate shipping to support installation while considering on-site staging constraints
- Installation Management
 - Creating and Managing installation schedules
 - Provide weekly progress updates to customer
 - On-site coordination manager (optional)
- Progress Reporting
 - Provide detailed reporting on installation and shipping progress
- Quality Inspections/Punchlisting
 - Thorough Inspections using scissor lifts to verify rack is installed per approved drawings, along with formal report
 - Set up 3rd party professional inspections required by AHJ or end user



91210 - Amazon HMW3 - Quincy Wave Schedule							WEEK #1				WEEK #2	
ORDER	ITEM #	PART NUMBER	DESCRIPTION	DRAWING #	COLOR	TOTAL QUANTITY	QTY SHIPPED THIS WEEK PER SN	TOTAL SHIPPED	TOTAL DEMAND	AHEAD OR BEHIND DEMAND	QTY SHIPPED THIS WEEK PER SN	TOTAL SHIPPED
91210	1	UT42444HA-S	42" D X 444" H, "THA" UPRIGHT W/ SPECIAL BRACING & BP4-80-80-38 (BACK-TO-BACK ROWS)	SIM TBS-4786-B	P177 (LIGHT GREY)	2,547		0	0	0		0
91210	2	UT42444HA-S	42" D X 444" H, "THA" UPRIGHT W/ BCR PDB-138" SPECIAL BRACING & BP4-80-80-38 (SINGLE ROWS)	SIM TBS-4789-B	P177 (LIGHT GREY)	559		0	0	0		0
91210	3	UT24444HB-S	24" D X 444" H, "THB" UPRIGHT W/ SPECIAL BRACING & BP4-80-80-38	SIM TBS-4785-B	P177 (LIGHT GREY)	771	210	330	80	130	120	330
91210	4	UT30444HB-S	30" D X 444" H, "THB" UPRIGHT W/ SPECIAL BRACING & BP4-80-80-38	SIM TBS-4784-B	P177 (LIGHT GREY)	81	81	81	41	40		81
91210	5	UT48444HB-S	48" D X 444" H, "THB" UPRIGHT W/ SPECIAL BRACING & BP4-80-80-38	SIM TBS-4783-B	P177 (LIGHT GREY)	1,562	360	810	157	203	450	810
91210	6	UT60444HB-S	60" D X 444" H, "THB" UPRIGHT W/ SPECIAL BRACING & BP4-80-80-38	SIM TBS-4782-B	P177 (LIGHT GREY)	94	94	94	34	60		94
91210	7	KT30D-051-BA	BEAM, 3" H X 51" L, 3/8" DROP ON 2-PIN EP	STD	P882 (PATRIOT RED)	1205	655	655	122	533		655
91210	8	KT30D-102-BA	BEAM, 3" H X 102" L, 3/8" DROP ON 2-PIN EP	STD	P882 (PATRIOT RED)	71,060	11,550	18,374	7,106	4,444	6,824	18,374
91210	9	KT41D-048-BA	BEAM, 4-1/8" H X 48" L, 3/8" DROP ON 3-PIN EP	STD	P785 (AMAZON ORANGE)	749		0	0	0		0
91210	10	KT41D-096-BA	BEAM, 4-1/8" H X 96" L, 3/8" DROP ON 3-PIN EP	STD	P785 (AMAZON ORANGE)	34,587		0	0	0		0
91210	11	EB3204827AB1251	HSS 3" X 2" X 1/8" EXTENDED BACKSTOP BEAM, 48" LG.	ABS-1251-D	P785 (AMAZON ORANGE)	396		0	0	0		0
91210	12	EB3209627AB1251	HSS 3" X 2" X 1/8" EXTENDED BACKSTOP BEAM, 96" LG.	ABS-1251-D	P785 (AMAZON ORANGE)	19,773		0	0	0		0
91210	13	AFRS316AB1133	2-BOLT FRAME ROW SPACER FOR 3" COLUMN, 16" LG.	ABS-1133-C	GALV	3,979	3,979	3,979	0	3,979		3,979
91210	14	ARS3-58-0	RIGID ROW SPACER, "DC" SECTION FOR 3" COLUMN	STD	P177 (LIGHT GREY)	1,061	1,051	1,051	250	801		1,051
91210	15	ARS3-35-5	RIGID ROW SPACER, "DC" SECTION FOR 3" COLUMN	STD	P177 (LIGHT GREY)	87	87	87	45	42		87
91210	16	UPSL2-42-0	UPRIGHT PROTECTOR, 42" LG. SINGLE (LH)	STD	P150 (YELLOW)	86	86	86	0	86		86
91210	17	UPSR2-42-0	UPRIGHT PROTECTOR, 42" LG. SINGLE (RH)	STD	P150 (YELLOW)	86	86	86	0	86		86
91210	18	UPD2-47-0	UPRIGHT PROTECTOR, 47" LG. DOUBLE	STD	P150 (YELLOW)	35	35	35	35	0		35
91210	19	UPD2-24-0	UPRIGHT PROTECTOR, 24" LG. DOUBLE	STD	P150 (YELLOW)	54	54	54	54	0		54
91210	20	UPD2-30-0	UPRIGHT PROTECTOR, 30" LG. DOUBLE	STD	P150 (YELLOW)	10	10	10	10	0		10
91210	21	UPD2-48-0	UPRIGHT PROTECTOR, 48" LG. DOUBLE	STD	P150 (YELLOW)	100	100	100	100	0		100
91210	22	UPD2-60-0	UPRIGHT PROTECTOR, 60" LG. DOUBLE	STD	P150 (YELLOW)	6	6	6	6	0		6
91210	23	ACP220254AB0916	END OF ROW COLUMN PROTECTOR ANGLE BODY W/ TEARDROP CONNECTION	ABS-0916-B	P150 (YELLOW)	520	520	520	120	400		520
91210	24	UT00018HCTA2147	STUB COLUMN PHC X 18" WITH SADDLE FOOT	TAS-2147-B	P150 (YELLOW)	172	140	140	100	40		140
91210	25	CPCA5150	3-1/2" X 3-1/2" X 12 GA. PLATE (MIRRORS)	CAS-5150-A	PLATED	506	506	506	256	250		506
91210	26	BP4-80-80-06	SHIM, 8" W X 6" D X 1/16" T (4-HOLES)	STD	PLAIN	5,700	5,700	5,700	2,900	2,800		5,700
91210	27	BP4-80-80-13	SHIM, 8" W X 6" D X 1/8" T (4-HOLES)	STD	PLAIN	5,700	5,700	5,700	2,900	2,800		5,700
								0	0	0		0
		<u>HARDWARE</u>						0	0	0		0
91210	A	H001	SPRING CLIPS	N/A	PLATED	223,920	223,920	223,920	124,000	99,920		223,920
91210	B	H318	3/8-16 X 3-3/4" H.H. BOLT (BACKSTOPS/ ROW SPACERS)	N/A	PLATED	45,500		0	0	0		0
91210	C	H168	3/8-16 FLANGED LOCKNUT	N/A	PLATED	45,500		0	0	0		0
91210	D	H180	3/8" DIA. FLAT WASHER	N/A	PLATED	45,500		0	0	0		0
ORDER# WEEKLY GRAPH TOTAL GRAPH (+)												



Report	Reck Type - Rainbow	BAYS			
		Total	Complete	Remaining	% Complete
BAY	Bay Steel	160	160	0	100%
BAY	Wire Brackets	160	160	0	100%
BAY	Diodes	160	160	0	100%
BAY	Routing	160	160	0	100%
LINE	Routing/Wire Rack	160	160	0	100%
IND	Mirror Hous	4	0	4	0%
IND	EOB Guards	14	14	0	100%
IND	Lead Rating Placards	14	14	0	100%
		Area Overall Total:		87.50%	

BAY - Bay Color Changer when Component is Installed
LINE - Line Color Changer When Component is Installed
IND - Cell Color Changer when Component is Installed

Report	Reck Type - YMA	BAYS			
		Total	Complete	Remaining	% Complete
BAY	Bay Steel	1006	1006	0	100%
BAY	Wire Brackets	1006	1006	0	100%
BAY	Diodes	1006	1006	0	100%
BAY	Pin Lines	1006	891	195	82%
BAY	Routing	1006	955	121	88%
LINE	Routing/Wire Rack	190	190	0	100%
IND	Mirror Hous	31	0	31	0%
IND	EOB Guards	66	66	0	100%
IND	Lead Rating Placards	66	66	0	100%
		Area Overall Total:		85.55%	

BAY - Bay Color Changer when Component is Installed
LINE - Line Color Changer When Component is Installed
IND - Cell Color Changer when Component is Installed

Report	Reck Type - PTR/PTRB/PTR/PTI	BAYS			
		Total	Complete	Remaining	% Complete
BAY	Bay Steel	1354	0	1354	0%
BAY	Wire Brackets	1354	0	1354	0%
BAY	Diodes	1165	0	1165	0%
LINE	Routing/Wire Rack	828	0	828	0%
IND	Mirror Hous	32	0	32	0%
IND	EOB Guards	112	0	112	0%
IND	Lead Rating Placards	112	0	112	0%
		Area Overall Total:		0.00%	

BAY - Bay Color Changer when Component is Installed
LINE - Line Color Changer When Component is Installed
IND - Cell Color Changer when Component is Installed

Report	Reck Type - CEC	BAYS			
		Total	Complete	Remaining	% Complete
BAY	Bay Steel	44	0	44	0%
BAY	Wire Brackets	44	0	44	0%
LINE	Routing/Wire Rack	44	0	44	0%
IND	Lead Rating Placards	44	0	44	0%
		Area Overall Total:		0.00%	

BAY - Bay Color Changer when Component is Installed
LINE - Line Color Changer When Component is Installed
IND - Cell Color Changer when Component is Installed

Progress Tracker

Project Management Services

BuilderTrend

Jul 17, 2023

Job: 91266 - MDT9

Title:

Added By: Justin Shook

Log Notes:

See custom fields below

Weather Conditions:

Mostly Sunny



78° F

62° F

Wind: 12 mph

Humidity: 91%

Total Precip: 0"

Mon, Jul 17, 2023, 7:29 PM

Custom Fields

Inventory: Received 2 Speedrack trucks - as shipped

Received 11 Nashville Wire trucks - as shipped

The crew has run out of 60" uprights for Phase3 VNA

Site Coordination : -Nothing to report today, coordination meetings are still happening every morning - no obstacles at this time

Installation: -A crew of 31 worked from 7am-5:30pm today

Progress Tracking: See attached progress tracker

Phase1 - complete

Phase2

-39 new bays stood

-The crew has all the back-to-back netting installed and is working on the first single row netting

-Wire deck has been installed to CL18+1row

Progress Tracking: See attached progress tracker

Phase1 - complete

Phase2

-39 new bays stood

-The crew has all the back-to-back netting installed and is working on the first single row netting

-Wire deck has been installed to CL18+1row

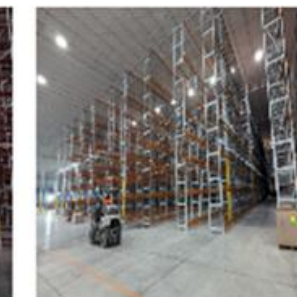
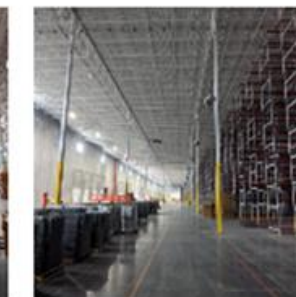
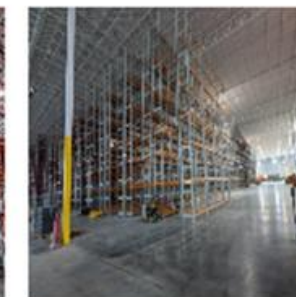
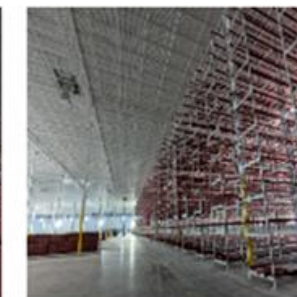
-Dividers have been installed to CL18-1row

-All available backstop beams and thru-bolts have been installed

Phase3 - 84 new bays stood before running out of uprights

Damaged Parts Inventory: -N/A

Attachments: 7



[Buildertrend](#)



Speedrack

Where Quality and Innovation Stack Up.

Thank You!

Dan Rozycki

Vice President of Sales & Marketing

email: drozycki@speedrack.net

phone: 616.887.0002 ext. 3565



Connect on LinkedIn!

